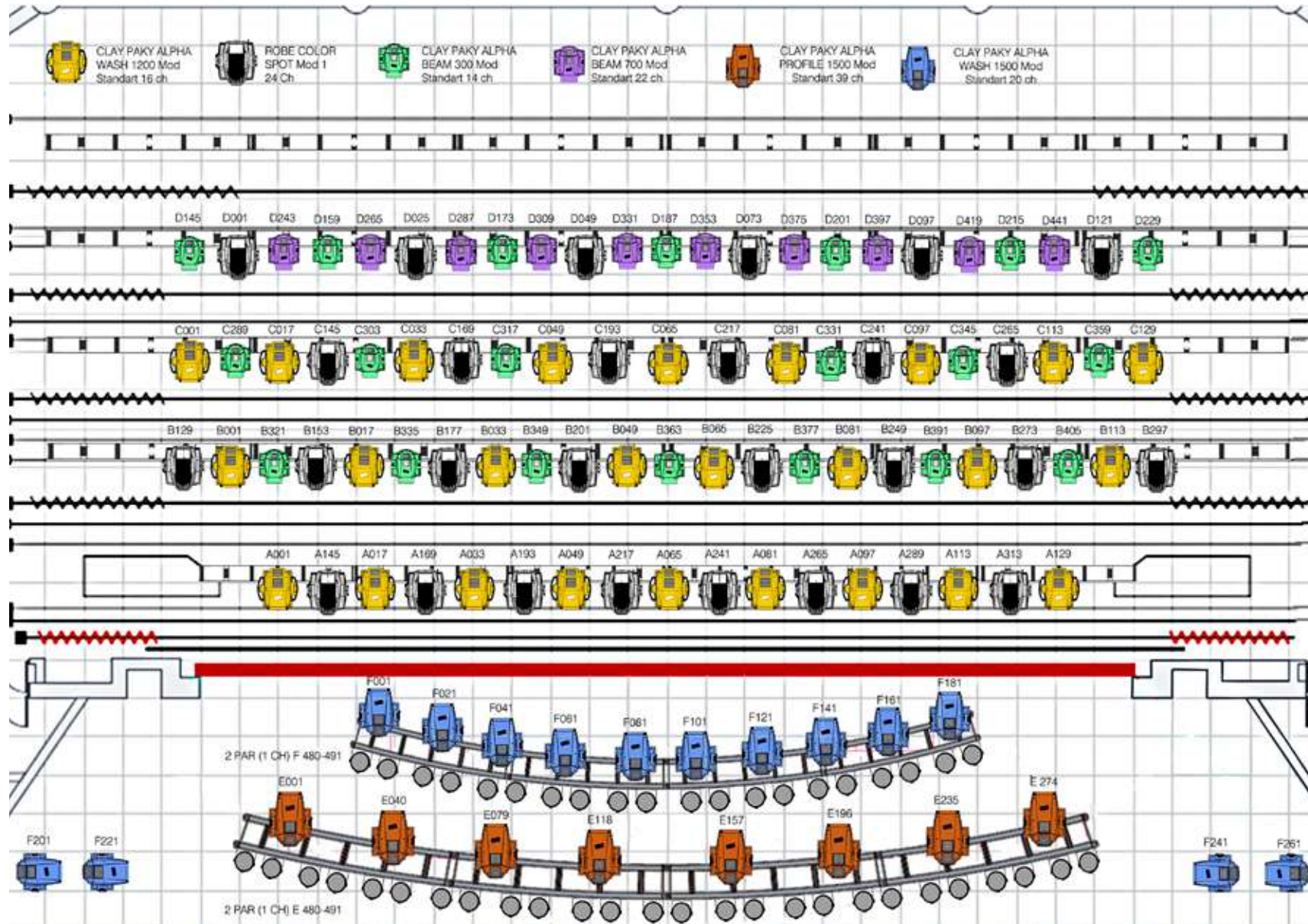


# Light / CBET

Standard Equipment

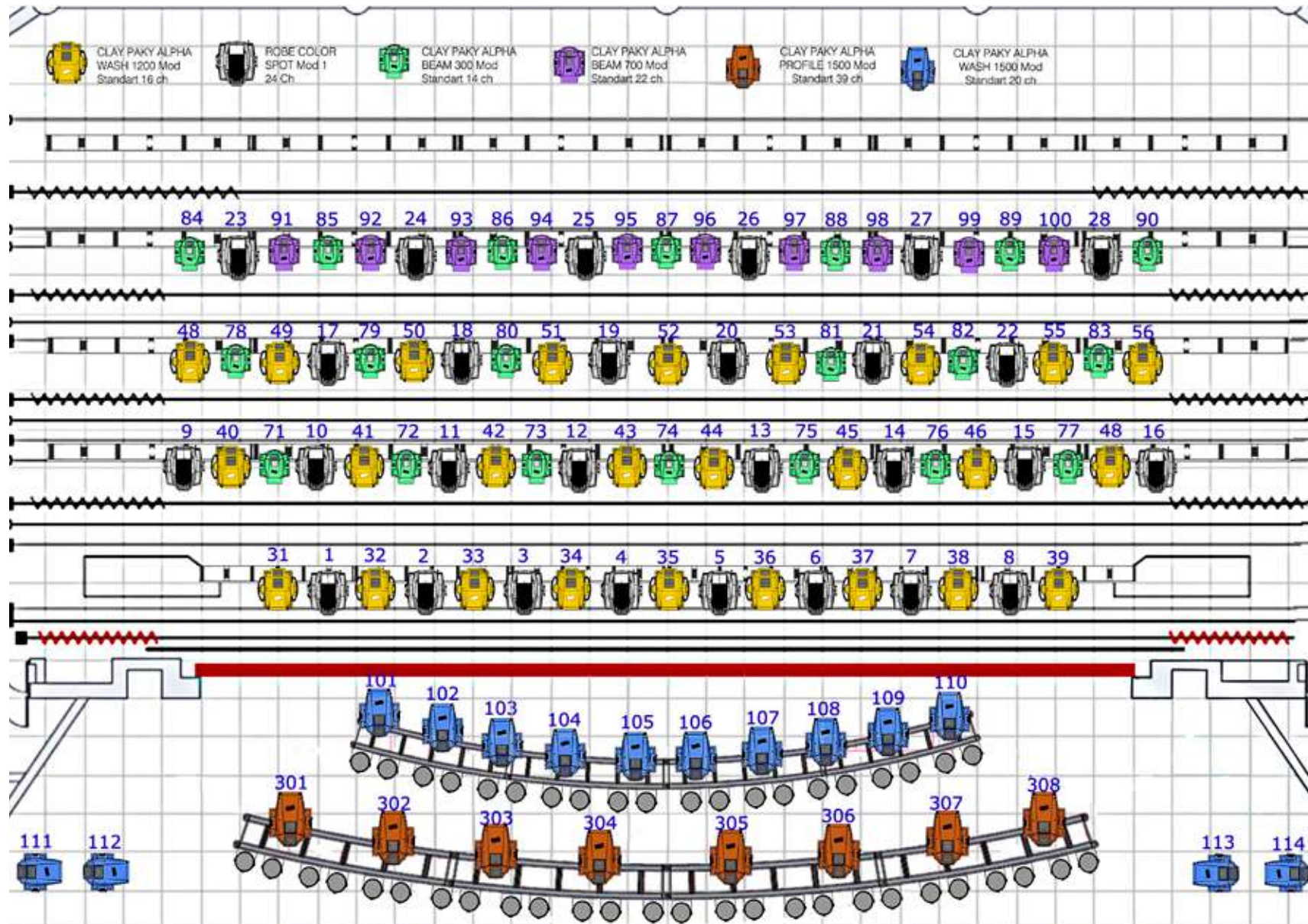
# Standard Equipment

CROCUS CITY HALL



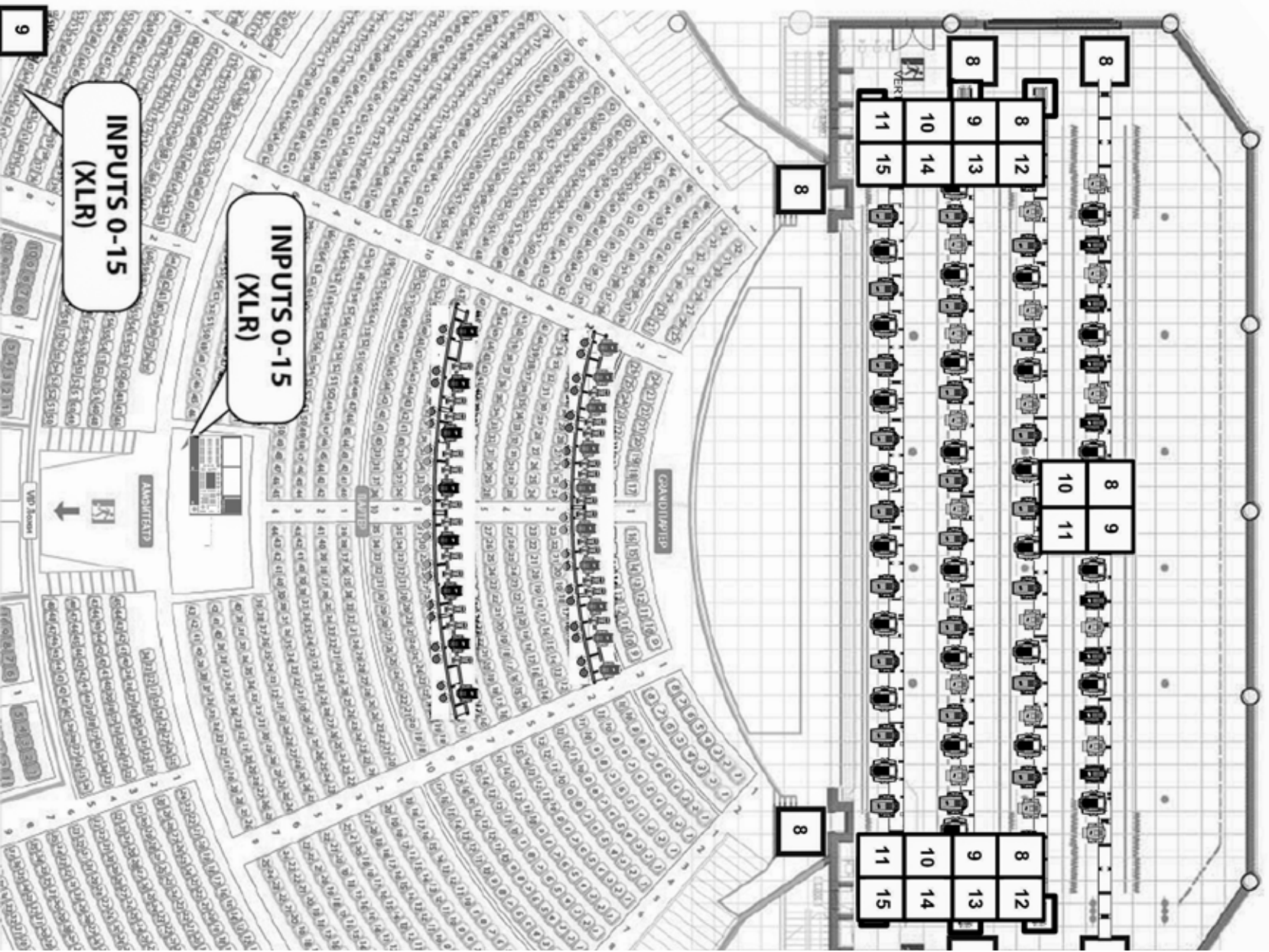
# Standard Equipment

CROCUS CITY HALL



# CROCUS CITY HALL

## Schema Universes (□)



# Standard Equipment

## CROCUS CITY HALL

FIXTURE	FRONT 1	FRONT 2	LODGE	TRUSS 1	TRUSS 2	TRUSS 3	TRUSS 4	TRUSS 5
<b>ALPHA WASH 1200</b>				1-001,1-017, 1-033,1-049, 1-065,1-081, 1-097,1-113, 1-129	2-001,2-017, 2-033,2-049, 2-065,2-081, 2-097,2-113.	3-001,3-017, 3-033,3-049, 3-065,3-081, 3-097,3-113, 3-129		
<b>ROBE SPOT 1200</b>				1-145,1-169, 1-193,1-217, 1-241,1-265, 1-289,1-313	2-129,2-153, 2-177,2-201, 2-225,2-249, 2-273,2-297	3-145,3-169, 3-193,3-217, 3-241,3-265.	4-001,4-025, 4-049,4-073, 4-097,4-121	
<b>ALPHA WASH 1500</b>		6-001,6-021, 6-041,6-061, 6-081,6-101, 6-121,6-141, 6-161,6-181.	6-201,6-221, 6-241,6-261,					
<b>ALPHA PROFILE 1500</b>	5-001,5-040, 5-079,5-118, 5-157,5-196, 5-235,5-274							
<b>ALPHA BEAM 700</b>							4-243,4-265, 4-287,4-309, 4-331,4-353, 4-375,4-397, 4-419,4-441.	
<b>ALPHA BEAM 300</b>					2-321,2-335, 2-349,2-363, 2-377,2-391, 2-405	3-289,3-303, 3-317,3-331, 3-345,3-359	4-145,4-159, 4-173,4-187, 4-201,4-215, 4-229	
<b>PAR 64/ ETC SOURCE</b>	5-480/491 5-492/503	6-480/491 6-492/503						

## Standard Equipment Light / Свет

### Moving heads / Moving lights / Прожекторы с движущимся корпусом

Robe Color Spot 1200	28
Clay Paky Alpha Beam 700	10
Clay Paky Alpha Beam 300	20
Clay Paky Alpha Wash 1200	26
Clay Paky Alpha Wash 1500	14
Clay Paky Alpha Profile 1500	8

### Spotlights / Прожекторы театральные

ADB C201	14
ET Source Four 14	12
Spotlight RP 1280	16
Robert Juliat Aramis 2500W	4

### Fog machines / Генераторы дыма

Jem ZR 33 Hi-Mass	1
-------------------	---

### Control / Пульт

MA Lighting Grand MA 2-Full Size	1
----------------------------------	---

## Additional lighting equipment / Аренда

Clay Paky Sharpy	20
Clay Paky Alpha Wash 1500	12
Martin Mac Aura	24
JB Lighting A12	16
Martin Atomic 3000	12
Blend 2 Lite par 2*650	16
MDG Atmosphere (APS) H.O	1